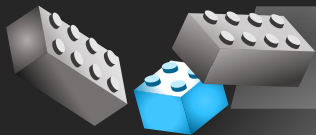
A collection of approximately 12 colorful LEGO bricks (red, blue, purple, yellow, green, and white) scattered around the central text. Some bricks are stacked, while others are lying flat or at an angle. The bricks are 1x3 and 1x4 sizes.

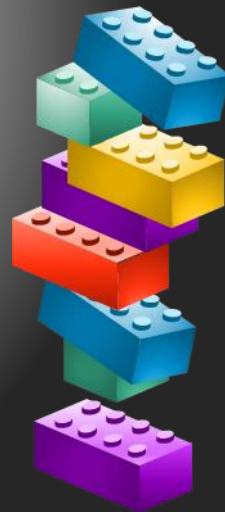
Elementary Configuration

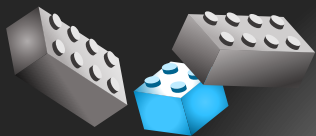
Board Workshop Update
September 10, 2019



We've Been Busy


- Parent Survey Data Posted – Disaggregated
- Teacher Survey Data Posted
- 3 Parent Listening Sessions Held
- 3 Teacher/Staff Listening Sessions Held
- Listening Session with District Advisory
- Configuration Committees Met
- Committee Debrief
- Planning for School Visits
- Branford Parent Survey at SAC/APT





Communication

[Home](#) [School Board](#) [Superintendent](#) [About SCSD](#) [Departments](#) [Resources](#) [Bids](#) [Search](#) [Schools](#)

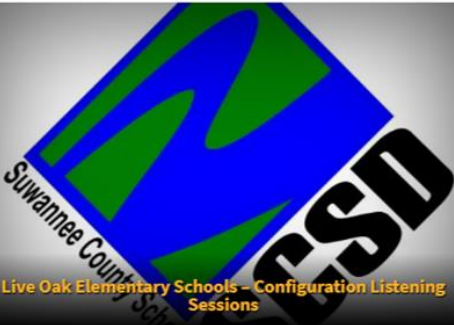


SUWANNEE COUNTY SCHOOL DISTRICT

My Choice for High Quality Education

[Google](#) [Student Shortcuts](#)

[Elementary School Configuration](#)



Live Oak Elementary Schools – Configuration Listening Sessions

[Parents](#) [Students](#) [Staff](#) [District News](#)

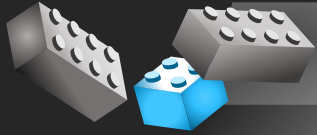
Welcome to Suwannee County School District!

District Vision
Suwannee County School District will be a system of excellence ensuring all students are prepared for personal success.

District Mission
Suwannee County Schools will educate all students in a safe and supportive learning environment that will develop life-long learners and productive citizens.

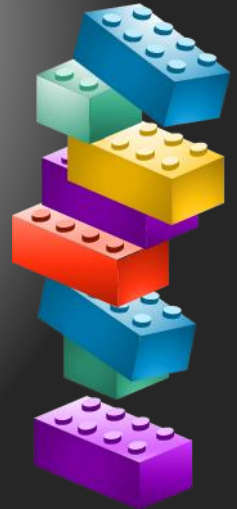
[Superintendent Feedback](#) [Code of Conduct](#) [Lunch Menu](#) [Report Bullying](#)

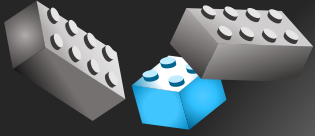
CONFIGURATION@SUWANNEE.K12.FL.US



Configuration Committee

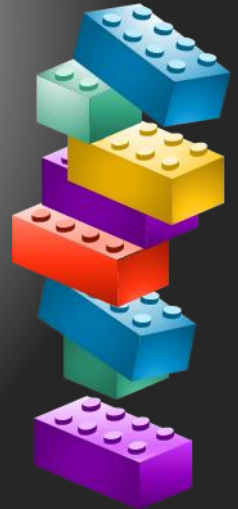
- Chair Planning Meeting
- Listening Sessions
 - 3 Parent Sessions
 - 3 Teacher/Staff Sessions
 - 1 District Advisory Session
- Listening Session Debrief
- Chairs meet again on September 16, 2019

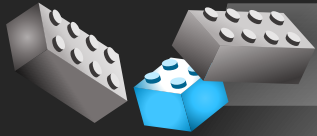




District Advisory

- July 15, 2019
- Presentation to DAC
- Highlights of Plan and Process
- August 26, 2019
- Listening Session with Committee Chairs
- Next Meeting – September 23, 2019

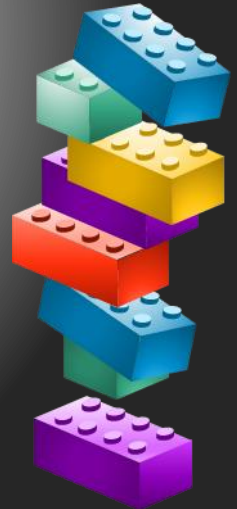


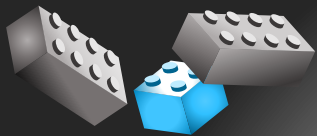


Configuration Committees

- Enrollment, Attendance, Safety – Malcolm Hines
- Human Resources – Walter Boatright
- Curriculum and Design – Amy Boggus
- Administrative Services – Bill Brothers
- Student Support Services – Debbie Land

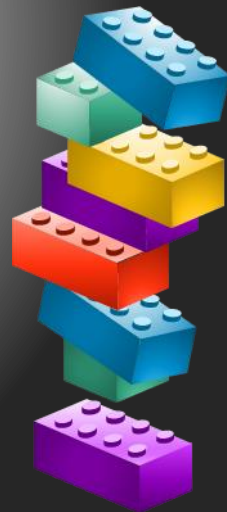
CONFIGURATION@SUWANNEE.K12.FL.US

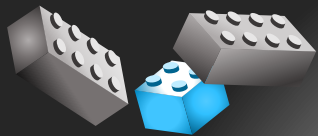




Committee Debrief

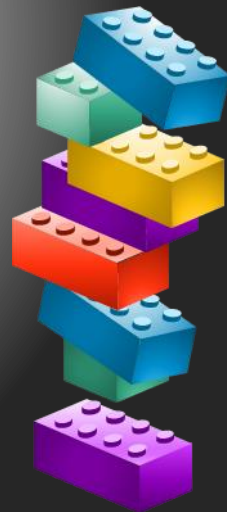
- September 3, 2019
- Committees compiling input
- Looking at Schools to Visit

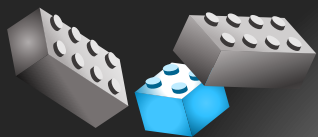




HR Committee Update

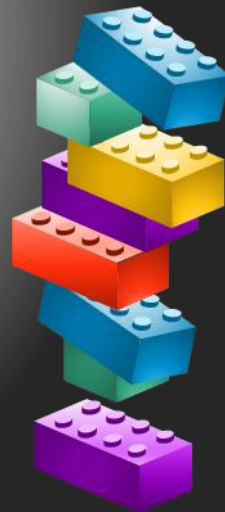
- Relationships – Principals/Teams
- Demographic Ratios, Experience
- Scary Situation – Worried about “stuff”
- Support Staff moving?
- What decisions are district and which belong to the school principal once assigned?
 - Core teams?
 - Departmentalization
- Schools to visit: Alachua, Leon, Jacksonville

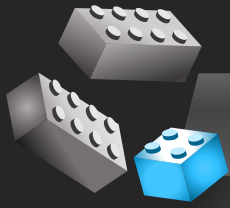




Enrollment Committee

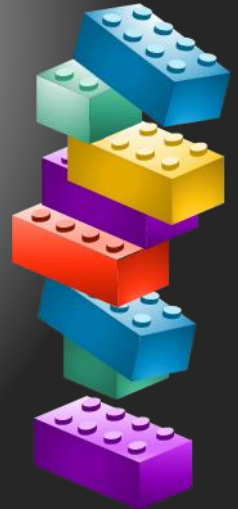
- Demographic Ratios – Diversity
- Where will new students register?
- Application Process
- Who gets first choice?
- What if parents don't choose?
- Who owns enrollment?
- Siblings?
- Employee children?
- October Workshop – Enrollment Process

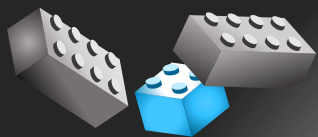




Student Support Committee

- PreK-PreK Handicapped
- Self-Contained Classrooms
- Paraprofessional Site Assignment
- Deans?
- Spanish speaking parent info
- Health issues
- Siblings in SC classrooms

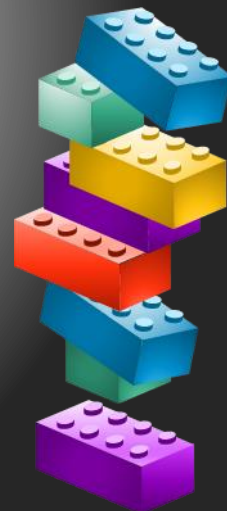


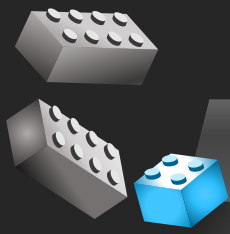


Curriculum Committee

- Teacher manuals
- Vertical Alignment – same curriculum
- PD/PLCs
- Theme integration
- Time
- Music Classes
- Media Centers
- Master Schedules

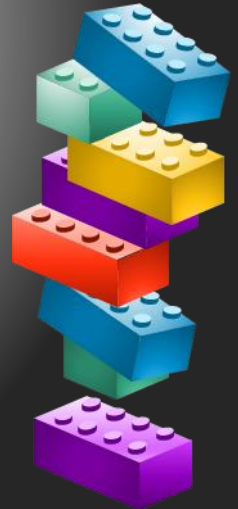
Visit Jacksonville, Crystal Springs





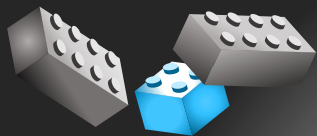
Admin Committee – Facilities, IT, Food Service, Transportation

- Can PreK still eat in the classroom?
- Restrooms
- Boxes – pallet sharing
- Summer Helpers
- Summer packing?
- Playgrounds
- Start times
- Can Principal or AP stay at the plant?



District v/s School Decisions





Magnet School Visits

Magnet Schools

Magnet schools are public schools with a particular theme or academic focus, such as mathematics, science, technology, business, or performing arts. They provide parents and students with the option of choosing a school that matches a student's interests. Magnet schools offer students specialized programs and create innovative learning approaches in a diverse environment.

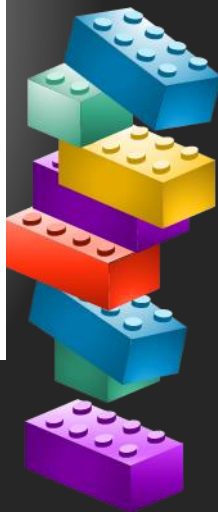
School Search

Select District: School Name: City: ZIP:

[Export to Excel](#)

Total number of records found for your search criteria is 13

School Name	District	Address	Grades Served	SACS Accredited	Status	Magnet Speciality
ABRAHAM LINCOLN MIDDLE SCHOOL (352) 955-6711 https://www.sbac.edu/lincoln	ALACHUA	1001 SE 12TH ST GAINESVILLE, FL 32641-8101	6-8	No	Magnet Program	Academically Talented
ARCHER ELEMENTARY (352) 495-2111 https://www.sbac.edu/archer	ALACHUA	14533 SW 170TH ST ARCHER, FL 32618-4621	PREK-5	No	Magnet Program	Academically Talented
EASTSIDE HIGH SCHOOL (352) 955-6704 https://www.sbac.edu/eastside	ALACHUA	1201 SE 43RD ST GAINESVILLE, FL 32641-7661	9-12	Yes	Magnet Program	International Baccalaureate
F. W. BUCHHOLZ HIGH SCHOOL (352) 955-6702 https://www.sbac.edu/buchholz	ALACHUA	5510 NW 27TH AVE GAINESVILLE, FL 32606-6405	9-12	Yes	Magnet Program	Other



Planning for Branford

- Survey to Parents at SAC/APT (9/9/2019)
- Survey to Teachers – PD Day (9/23/2019)

Work with Principal, Staff, Parents to look at desired options and available resources.