

SCSB - STUDENT DROPOFF

CONSTRUCTION PLANS

FOR:
Suwannee County School Board
Mark Carver, Director of Facilities
702 NW 2nd ST
Live Oak, FL 32064
Phone: (386) 697-4151



GTC Design Group, LLC.
Auth. # 9461
Structural / Civil Engineers
www.gtcdesigngroup.com

Live Oak
P.O. Box 187
130 West Howard Street
Live Oak, FL 32064
Phone: (386) 362-3678
Fax: (386) 362-6133

Lake City
176 NW Lake Jeffery Rd
Lake City, FL 32055
Phone: (386) 719-9985
Fax: (386) 719-8828
www.gtcdesigngroup.com

Chadwick W. Williams, PE 63144
Auth. #: 9461

SHEET INDEX

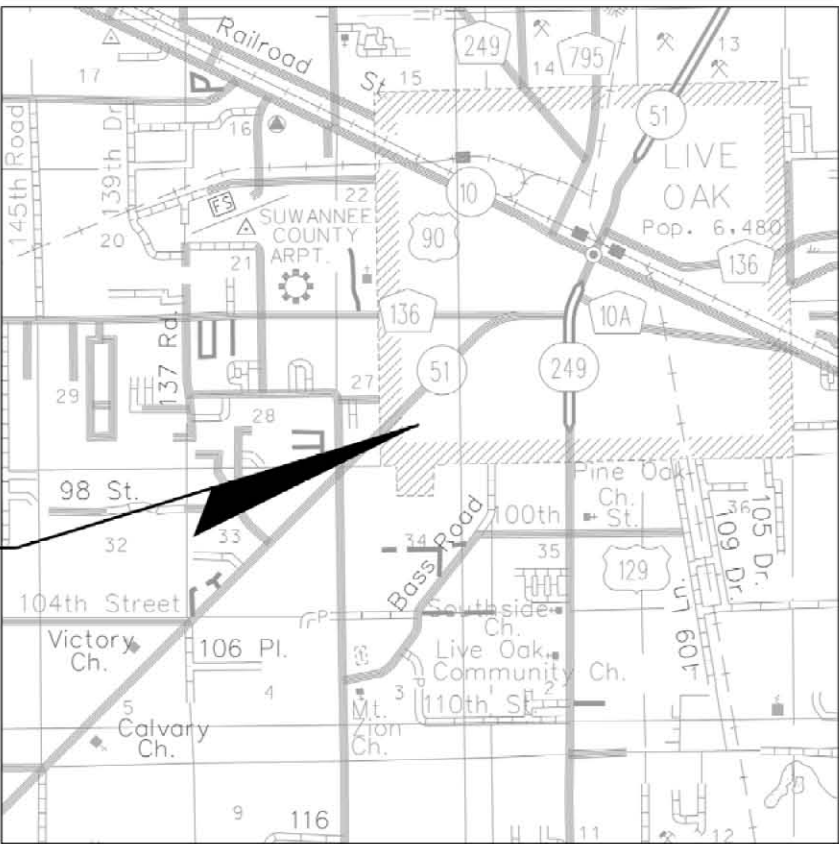
1	GENERAL NOTES AND DETAILS
2	EXISTING CONDITIONS
3	SITE PLAN
4	GRADING PLAN
5-6	CROSS SECTIONS
7-8	DETAILS
9	EROSION CONTROL NOTES & DETAILS

LEGEND

EXISTING		PROPOSED	
CONCRETE MONUMENT FOUND	■	TELEPHONE POLE	○
IRON PIPE FOUND	●	TELEPHONE MANHOLE	⊙
ELECTRIC METER	⊙	ELECTRIC MANHOLE	⊙
ELECTRIC MANHOLE	⊙	ELECTRIC METER	⊙
LIGHT STANDARD	○	LIGHT	○
POWER POLE	○	STANDARD POWER POLE	○
SHARED POWER POLE W/ TRANSFORMER	○	POWER POLE SHARED	○
SHARED POWER POLE	○	POWER POLE SHARED W/ TRANSFORMER	○
TELEPHONE POLE	○	GAS METER	⊙
REDUCER	○	GAS VALVE	⊙
WATER METER	⊙	WATER METER	⊙
WATER VALVE	⊙	WATER VALVE	⊙
FIRE HYDRANT	⊙	WATER REDUCER	⊙
BACKFLOW PREVENTER	⊙	WATER TEE	⊙
SANITARY SEWER VALVE	⊙	WATER 90° BEND	⊙
SANITARY MANHOLE	⊙	SINGLE WATER SERVICE	⊙
STORMWATER MANHOLE	⊙	DOUBLE WATER SERVICE	⊙
FDOT STORMWATER MANHOLE	⊙	FIRE HYDRANT	⊙
GROUND CONTOUR	— 25 —	BACKFLOW PREVENTER	⊙
D.O.T. MARKER FOUND	*	SANITARY MANHOLE	⊙
GAS METER	⊙	SANITARY VALVE	⊙
GAS VALVE	⊙	SANITARY SINGLE SERVICE	⊙
SOIL BORING LOCATION	⊙	SANITARY DOUBLE SERVICE	⊙
SINGLE POST SIGN	⊙	GROUND CONTOUR	— 25 —
BENCH MARK	⊙	DITCH BLOCK	⊙
SECTION CORNER	⊙	STORMWATER MANHOLE	⊙
		FLOW ARROW	→
		HANDICAP PARKING	⊙
		MITERED END	⊙
		SIGN	⊙

ABBREVIATIONS

PL	PROPERTY LINE	IP	IRON PIPE
CL	CENTER LINE	MH	MANHOLE
BL	BASE LINE	G	GAS
SAN	SANITARY SEWER	UC	UNDERGROUND CABLE
ST	STORM SEWER	OC	OVERHEAD CABLE
E	ELECTRIC	W	WATER LINE
OHE	OVERHEAD ELECTRIC	HDPE	HIGH-DENSITY POLYETHYLENE
UG	UNDERGROUND ELECTRIC	RCP	REINFORCED CONCRETE PIPE-ROUND
OHT	OVERHEAD TELEPHONE	RCPA	REINFORCED CONCRETE PIPE-ARC
UT	UNDERGROUND TELEPHONE	RCPE	REINFORCED CONCRETE PIPE-ELLIPTICAL
R	RADIUS	CMP	CORRUGATED METAL PIPE-ROUND
CO	CLEANOUT	CMPA	CORRUGATED METAL PIPE-ARC
BM	BENCH MARK	BCCMP	BITUMINOUS COATED CORRUGATED METAL PIPE
IE	INVERT ELEVATION	BCCSP	BITUMINOUS COATED CORRUGATED STEEL PIPE
LF	LINEAR FEET		

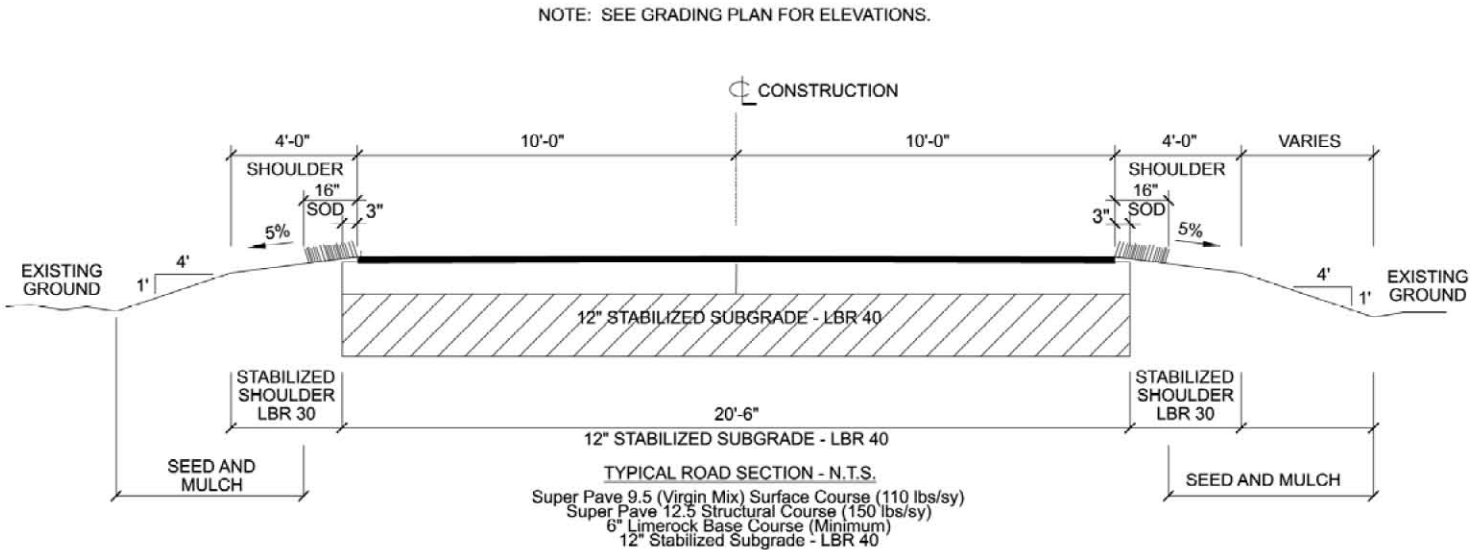


LOCATION MAP

SECTION 27, TOWNSHIP 2 SOUTH, RANGE 13 EAST
SUWANNEE COUNTY, FLORIDA

GENERAL NOTES

1. The contractor shall verify all existing conditions and dimensions at the job site to insure that all new work will fit in the manner intended on the plans. Should any conditions exist that are contrary to those shown on the plans, the contractor shall notify the engineer of such differences immediately & prior to proceeding with the work.
2. The site is located in Section 27 of Township 2 South, Range 13 East, Suwannee County, Florida.
3. The contractor shall maintain the construction site at all times in a secure manner. All open trenches and excavated areas shall be protected from access by the general public.
4. Boundary and topographical information shown was obtained from a survey performed by J. Sherman Frier & Associates, P.S.M., Florida Certificate #7170.
5. Contractor shall contact J. Sherman Frier & Associates at 386-362-4629 for electronic file for stake out.
6. Any public land corner within the limits of construction is to be protected. If a corner monument is in danger of being destroyed and has not been properly referenced, the contractor should notify the engineer.
7. Contractor shall contact GTC Design Group, LLC to perform site inspections.
 - A. Erosion & sediment control inspection (prior to commencing construction)
 - B. Completion of clearing and grubbing (GTC visual site visit)(no test requirements)
 - C. Rough Grading and Drainage Structures and pipes in place (Density and LBR test results required)
 - D. Subgrade and limerock base of pavement sections complete (Density and LBR test results required)
 - E. Asphalt/Concrete in place (Thickness and Density tests required)
 - F. Final Site Compliance Inspection (once all improvements are finalized)
8. Contractors shall adhere to the Erosion Control Plan. All erosion control measures shall be implemented prior to construction and be continued until construction is complete. Any failure of erosion measures must be corrected immediately per SWPPP.
9. Contractor shall sod areas as shown in plans. All disturbed areas not sodded shall be seeded with a mixture of long-term vegetation and quick-growing short-term vegetation for the following conditions. For the months from September through March, the mix shall consist of 70 pounds per acre of long-term seed and 20 pounds per acre of winter rye. For the months of April through August, the mix shall consist of 70 pounds per acre of long term seed and 20 pounds per acre of millet.
10. Contractor shall coordinate all work with other contractors within project limits.
11. All stormwater pipes shall have a minimum cover of 6". Use Limerock backfill if pipe under pavement has less than 12" cover.
12. All construction, materials, and methods shall conform to the requirements of the Florida Department of Transportation Specifications for Road and Bridge Construction, Latest Edition. Certification by an approved testing laboratory is required (contractor responsibility). Payment shall be as specified in the bid proposal.
13. Final inspection for acceptance to be performed by GTC Design Group and Suwannee County School Board.
14. The location of the utilities shown in the plans is approximate only. The exact location shall be determined by the contractor during construction.
15. The stormwater system is designed in accordance with SRWMD.
16. A pad of rubble riprap shall be placed at the bottom of all collection flumes and collection pipe outlets.
17. Contractor shall provide an as-built survey meeting the requirement of Chapter 61G17 F.A.C. for the stormwater management systems. Include horizontal and vertical dimensional data so that improvements are located and delineated relative to be boundary. Provide sufficient detailed data to determine whether the improvements were constructed in accordance with the plans. Submit the survey to the engineer on reproducible 20 lb. vellum.
18. All erosion control measures shall be implemented prior to construction and be continued until construction is complete. Contractor shall take necessary measures to minimize erosion, turbidity, nutrient loading and sedimentation to adjacent lands and low areas. The Erosion and Sediment Control Plan shall be maintained as designed and upgraded as needed and directed by Engineer or SRWMD personnel. Construction designs and specification as outlined by the "Florida Erosion and Sediment Control Inspectors Manual" shall be adhered to.



PROJECT CONTACTS

GTC DESIGN GROUP
(386) 362-3678

SUWANNEE COUNTY SCHOOL BOARD
(386) 697-4151

CITY OF LIVE OAK PUBLIC WORKS
(386) 362-2276

SUWANNEE RIVER WATER MANAGEMENT
(396) 362-1001

CITY OF LIVE OAK POLICE DEPARTMENT
(386) 362-7463

CITY OF LIVE OAK FIRE DEPARTMENT
(386) 362-1313

REVISION NOTES

DATE

P.O. BOX 187

130 W HOWARD ST

LIVE OAK FL 32064

PHONE: (386) 362-3678

FAX: (386) 362-6133

176 NW LAKE JEFFREY RD

LAKE CITY, FL 32055

Phone: (386) 719-9885

Fax: (386) 719-8828



GTC Design Group, LLC

Auth. # 9461

Structural / Civil Engineers

www.gtcdesigngroup.com

SCSB - STUDENT DROPOFF

GENERAL NOTES & DETAILS

DRAWN

BY

CHECKED

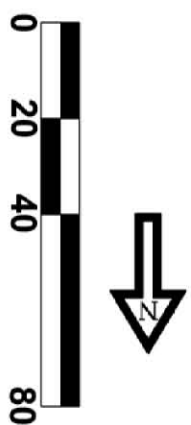
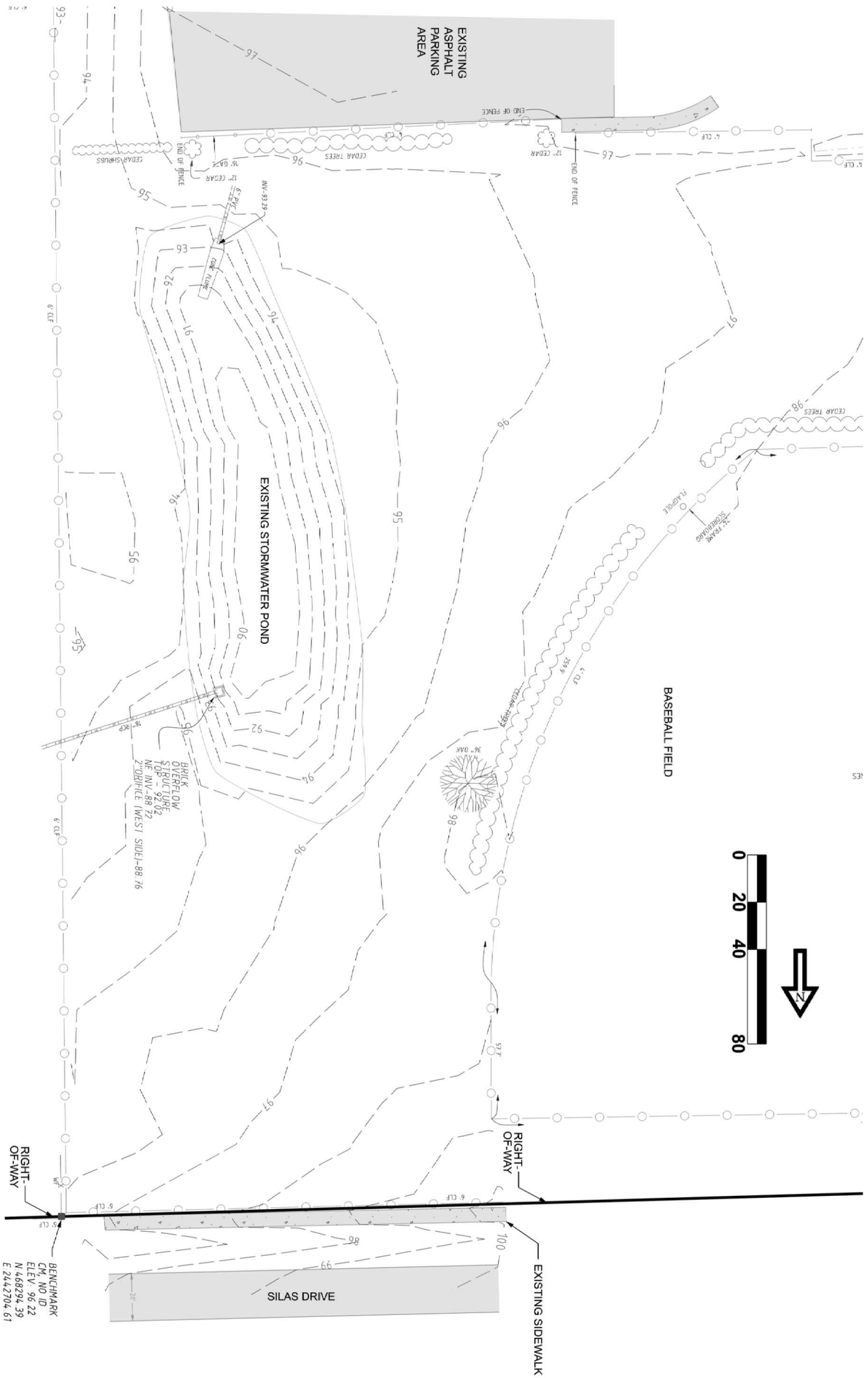
BY

PROJECT NUMBER

PF11-070

SHEET

1



BASEBALL FIELD

EXISTING SIDEWALK

EXISTING STORMWATER POND

EXISTING ASPHALT PARKING AREA

SCSB - STUDENT DROPOFF
EXISTING CONDITIONS

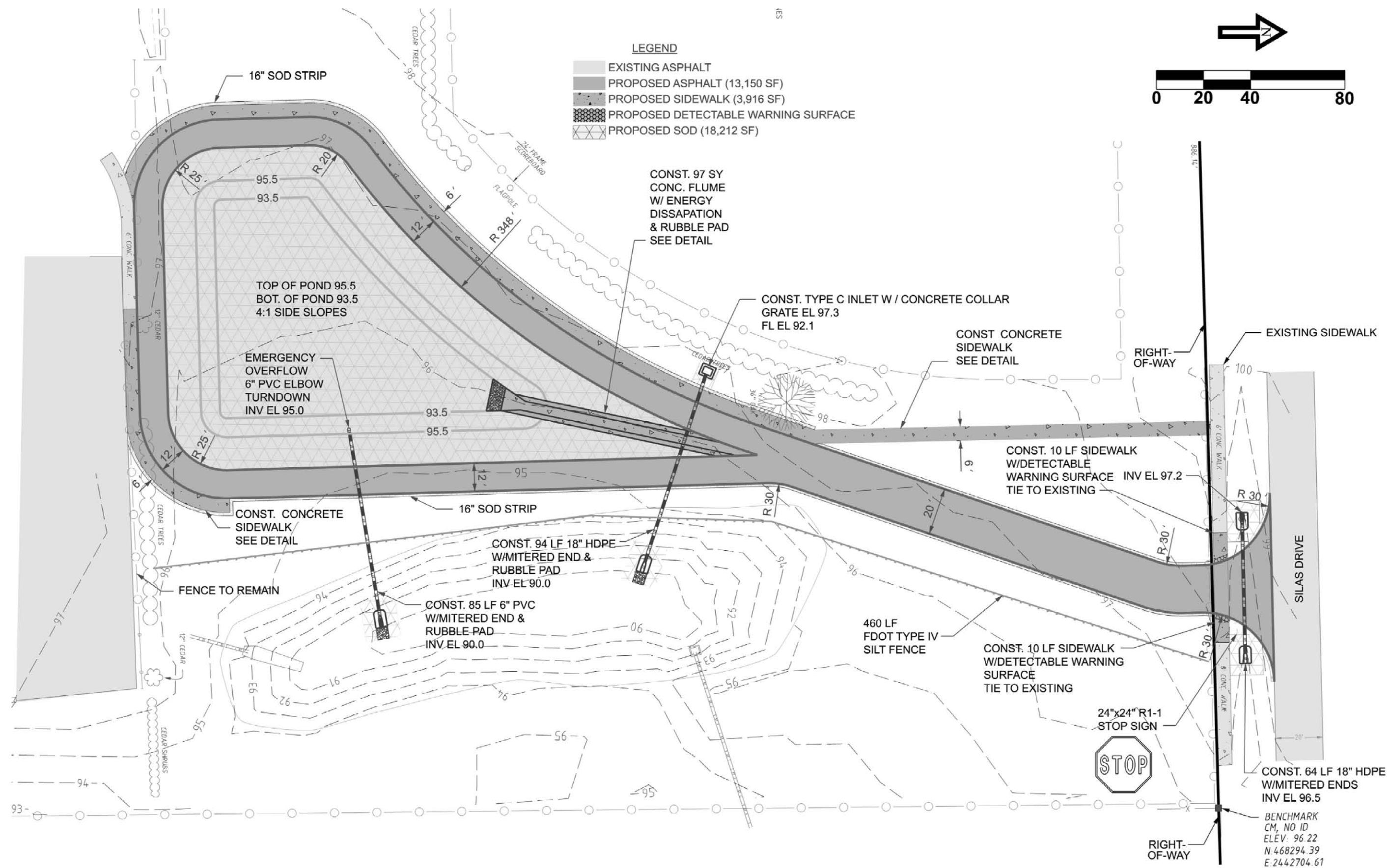
GTC
GTC Design Group, LLC. 176 NW LAKE JEFFREY RD
Auth. # 9461
Structural / Civil Engineers
www.gtcdesigngroup.com

P.O. BOX 187
130 W HOWARD ST
LIVE OAK FL, 32064
PHONE: (386) 362-3678
FAX: (386) 362-6133

LAKE CITY, FL 32055
Phone: (386) 719-9985
Fax: (386) 719-8828

DATE	REVISION NOTES

DRAWN BY BF	CHECKED BY CW
PROJECT NUMBER PF11-070	
SHEET 2	



CONST. INLET TYPE C
W/COLLAR
GRATE EL 97.3
FL EL 92.1



94 LF 18" HDPE

SECTION D

100

98

96

94

92

90

88

86

84

82

80

78

76

74

72

70

68

66

64

62

60

58

56

54

52

50

48

46

44

42

40

38

36

34

32

30

28

26

24

22

20

18

16

14

12

10

8

6

4

2

0

-2

-4

-6

-8

-10

-12

-14

-16

-18

-20

-22

-24

-26

-28

-30

-32

-34

-36

-38

-40

-42

-44

-46

-48

-50

-52

-54

-56

-58

-60

-62

-64

-66

-68

-70

-72

-74

-76

-78

-80

-82

-84

-86

-88

-90

-92

-94

-96

-98

-100

-102

-104

-106

-108

-110

-112

-114

-116

-118

-120

-122

-124

-126

-128

-130

-132

-134

-136

-138

-140

-142

-144

-146

-148

-150

-152

-154

-156

-158

-160

-162

-164

-166

-168

-170

-172

-174

-176

-178

-180

-182

-184

-186

-188

-190

-192

-194

-196

-198

-200

-202

-204

-206

-208

-210

-212

-214

-216

-218

-220

-222

-224

-226

-228

-230

-232

-234

-236

-238

-240

-242

-244

-246

-248

-250

-252

-254

-256

-258

-260

-262

-264

-266

-268

-270

-272

-274

-276

-278

-280

-282

-284

-286

-288

-290

-292

-294

-296

-298

-300

-302

-304

-306

-308

-310

-312

-314

-316

-318

-320

-322

-324

-326

-328

-330

-332

-334

-336

-338

-340

-342

-344

-346

-348

-350

-352

-354

-356

-358

-360

-362

-364

-366

-368

-370

-372

-374

-376

-378

-380

-382

-384

-386

-388

-390

-392

-394

-396

-398

-400

-402

-404

-406

-408

-410

-412

-414

-416

-418

-420

-422

-424

-426

-428

-430

-432

-434

-436

-438

-440

-442

-444

-446

-448

-450

-452

-454

-456

-458

-460

-462

-464

-466

-468

-470

-472

-474

-476

-478

-480

-482

-484

-486

-488

-490

-492

-494

-496

-498

-500

-502

-504

-506

-508

-510

-512

-514

-516

-518

-520

-522

-524

-526

-528

-530

-532

-534

-536

-538

-540

-542

-544

-546

-548

-550

-552

-554

-556

-558

-560

-562

-564

-566

-568

-570

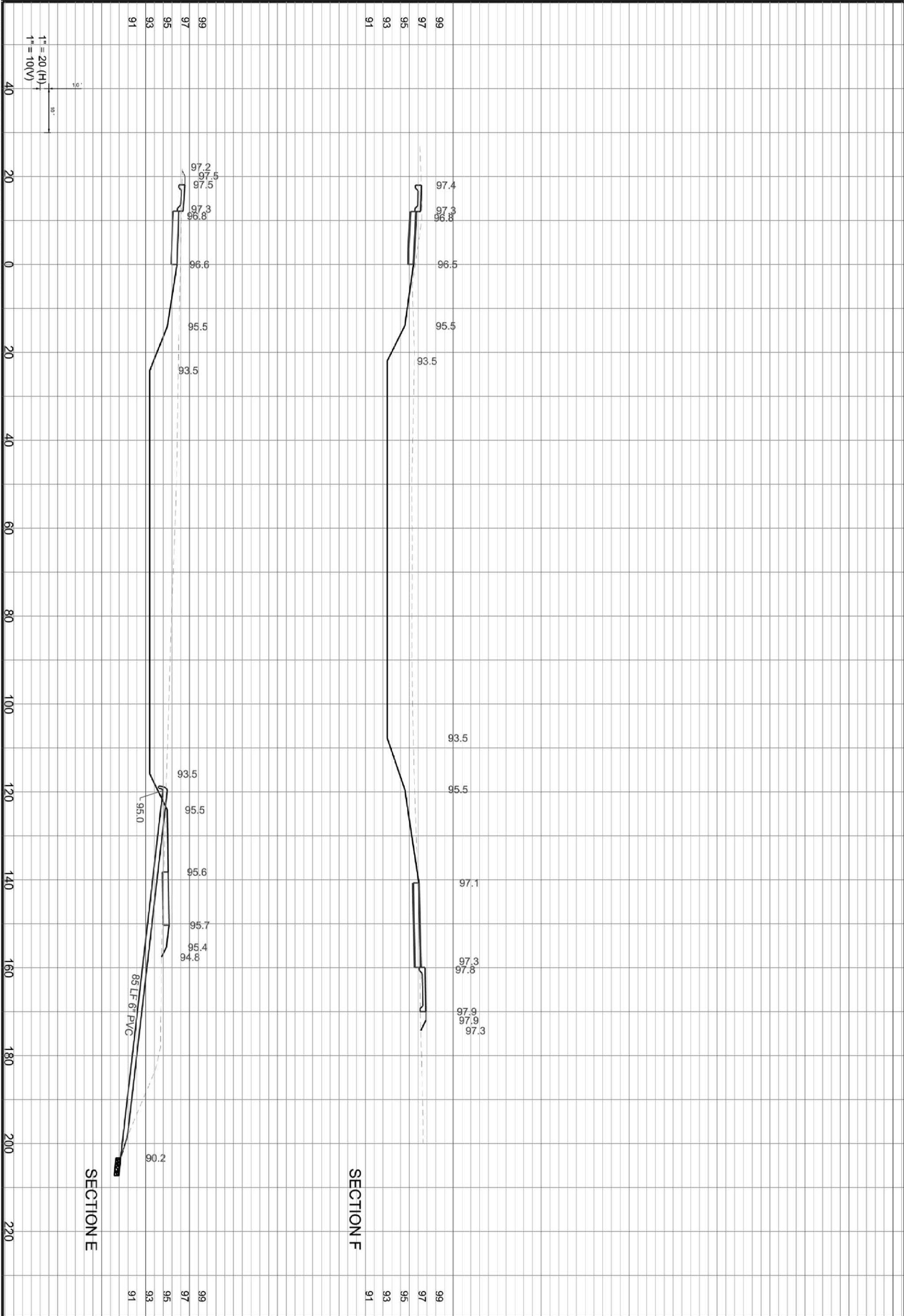
-572

-574

-576

-578

...:\CAD\11x17\05_06shot01.dgn 1/17/2012 1:35:17 PM



SCSB - STUDENT DROPOFF
CROSS SECTIONS

dg

GTC Design Group, LLC. 176 NW LAKE JEFFREY RD
Auth. # 9461
Structural / Civil Engineers
www.gtcdesigngroup.com

P.O. BOX 187
130 W HOWARD ST
LIVE OAK FL, 32064
PHONE: (386) 362-3678
FAX: (386) 362-6133

LAKE CITY, FL 32055
Phone: (386) 719-9985
Fax: (386) 719-8828

DATE	REVISION NOTES
9-20-10	
3-30-11	
4-25-11	
6-03-11	

DRAWN
BY
BF

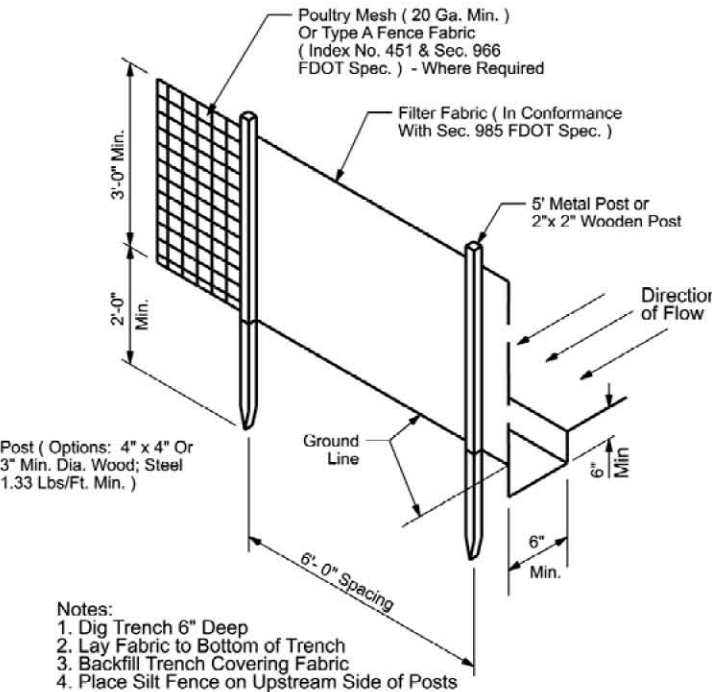
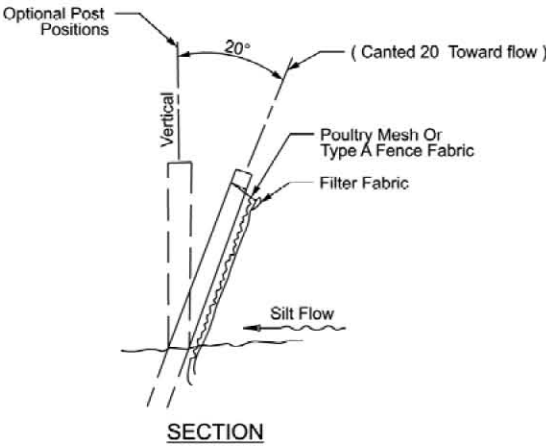
CHECKED
BY
CW

PROJECT NUMBER
PF11-070

SHEET
6

EROSION CONTROL NOTES

1. Contractor shall adhere to FDOT, Columbia County, SRWMD and other governing authorities for erosion and sediment control regulations. Contractor shall use BMP's from the "Florida Erosion and Sediment Control Inspector's Manual".
2. Sediment and erosion control facilities and storm drainage facilities detention basins shall be installed prior to any other construction.
3. Erosion control measures shall be inspected weekly and after each rainfall and replaced as necessary.
4. Sediment and erosion control measures shall not be removed until all construction is complete and until a permanent ground cover has been established.
5. All open drainage swales shall be grassed and riprap shall be placed as required to control erosion.
6. Silt fences shall be located on site to prevent sediment and erosion from leaving right-of-way limits.
7. Additional erosion control devices shall be used as required.
8. During construction and after construction is complete, all structures shall be cleaned of all debris and excess sediment.
9. Contractor is responsible for the construction and maintenance of all erosion and sedimentation controls during proposed construction.
10. All disturbed areas will be sodded.
12. All stabilization practices shall be initiated as soon as practicable in areas of the job where construction activities have temporarily or permanently stopped, but in no case shall the disturbed area be left unprotected for more than three (3) days.
14. If the proposed erosion control plan does not work, the contractor should use the BMP's in the Florida Erosion and Sediment Control Inspector's Manual to implement a plan that will work and meet actual field conditions.
15. All waste generated on the project shall be disposed of by the contractor in areas provided by contractor.
16. Loaded haul trucks shall be covered with tarps.
17. Excess dirt shall be removed daily.
18. Fertilizer shall be applied as specified in the plans and specifications.
19. This project shall comply with all water quality standards. Permit required from SRWMD has been obtained.
20. All pollution controls shall be maintained at all times.
21. Type IV silt fence shall be placed to prevent sedimentation. Silt fence shall be replaced after three (3) months or when sediment reaches one-half (1/2) the height of the fabric.
22. Qualified personnel shall inspect the area used for storage of stockpiles, the silt fence and straw bales, the location where vehicles enter or exit the site, and the disturbed areas that have not been finally stabilized, at least once every seven (7) calendar days and within 24 hours of the end of a storm of 2 inches or greater.
23. Sites that have been finally stabilized with sod shall be inspected at least once every week.



TYPE IV SILT FENCE
NTS

AS COMPARED TO TYPE III SILT FENCE, TYPE IV FENCE HAS GREATER STRENGTH AND HEIGHT WHICH REDUCES THE POSSIBILITY OF SEDIMENT AND WATER FROM OVERTOPPING THE FENCE. AS A RESULT, AVOID USING TYPE IV FENCE IN AREAS WHERE THE DETAINED WATER WOULD BACK INTO TRAVEL LANES OR OFF THE RIGHT OF WAY.

REVISION NOTES	DATE	P.O. BOX 187 130 W HOWARD ST LIVE OAK FL 32064 PHONE: (386) 362-3678 FAX: (386) 362-6133	176 NW LAKE JEFFREY RD LAKE CITY, FL 32055 Phone: (386) 719-9885 Fax: (386) 719-8828
CCBCC - NW GREENVISION COURT		GTC Design Group, LLC Auth. # 9461 Structural / Civil Engineers www.gtcdesigngroup.com	
EROSION CONTROL NOTES & DETAILS			
DRAWN BY BF	CHECKED BY CW	PROJECT NUMBER PF11-070	
SHEET 9			