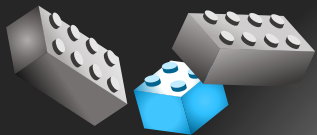
A collection of approximately 12 colorful LEGO bricks (red, blue, purple, yellow, green) scattered around the central text. Some bricks are stacked, while others are lying flat or at an angle. The colors include red, blue, purple, yellow, and green.

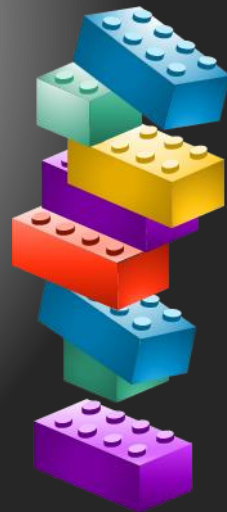
Elementary Configuration

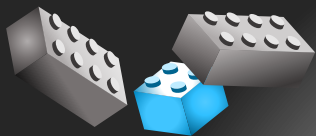
Board Workshop Update
August 13, 2019



We've Been Busy


- Administrative Retreat Planning Sessions
- Presentation to District Advisory Committee
- Configuration Committees Formed
- Pre-Planning Conversation with Teachers
- Teacher Interest and Opinion Survey
- Meet Your Teacher – Parent Interest Survey
- Parent Listening Sessions
- Teachers and Staff Listening Sessions
- Committee Debrief Session
- Planning for School Visits





Communication

Home School Board Superintendent About SCSD Departments Resources Bids Search Schools



SUWANNEE COUNTY SCHOOL DISTRICT

My Choice for High Quality Education

Student Shortcuts Elementary School Configuration

Parents

Students

Staff

District News

Welcome to Suwannee County School District!

District Vision

Suwannee County School District will be a system of excellence ensuring all students are prepared for personal success.

District Mission


Suwannee County Schools will educate all students in a safe and supportive learning environment that will develop life-long learners and productive citizens.

Superintendent Feedback

Code of Conduct

Lunch Menu

Report Bullying



CONFIGURATION@SUWANNEE.K12.FL.US

ELEMENTARY SCHOOL CONFIGURATION

[Home](#) / [Departments](#) / [Instructional Services](#) / [Elementary School Configuration](#)

School Board Votes to Change Elementary Configuration in Suwannee

Article from The Suwannee Democrat - July 3, 2019

'WE ARE CHOICE'

School board votes to reconfigure elementary schools with 'magnet-type' themed programs

By Mike Jones and Janice Zacher July 3, 2019 3 min to read



Suwannee County Board of Education, which controls public schools from K through 12th grade, will be reconfiguring its school system. The board will create elementary schools with a theme associated with the Suwannee County's four themes.



Suwannee County
Schools: Official
SCSB Site

@suwanneecountyschools

Home

About

Photos

Videos

Events

Posts

Community

Like Following Share ...

Like Comment Share



Suwannee County Schools: Official SCSB Site

22 hrs ·

Parents and Community Members are invited to give their input at three upcoming School Configuration Listening Sessions.

Tuesday – August 13, 2019 – 6:00pm to 7:30pm – Suwannee Primary School Cafeteria

Thursday – August 15, 2019 – 6:00pm to 7:30pm – Suwannee Elementary School Cafeteria

Tuesday – August 20, 2019 – 6:00pm to 7:30pm – Suwannee Intermediate School Cafeteria... [See More](#)



SUWANNEE.K12.FL.US

Suwannee County School District

Suwannee County Schools will educate all students in a safe and...



4

3 Comments 16 Shares



Like



Comment



Share

Learn More



Suwannee Democrat

Ann Day Branham likes this
Broadcasting & Media Pro...



Suwannee Chamber

Belinda Fries likes this
Community Organization



Suwannee Parks & Re...

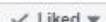
Laura Luse Williams likes t...
Sports & Recreation



Pages Liked by This Page



Suwannee High S...



Suwannee High Acad...



Suwannee Valley Elec...



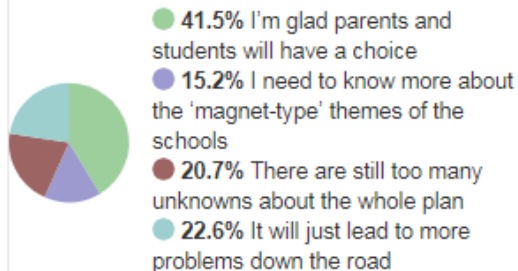
English (US) · Español · Português (Brasil) · Français (France) · Deutsch



Privacy · Terms · Advertising · Ad Choices · Cookies · More
Facebook © 2019

What do you think about Suwannee County School District reconfiguring three elementary schools?

You voted: I'm glad parents and students will have a choice



75°

75°

Suwannee Democrat

The Jasper News

Mayo Free Press

Search...

Menu

Subscribe

News

Sports

Classifieds

Community

Opinion

Obituaries

Shop


Magazines

Public Notices


FEATURED

SCSD hosting school configuration listening sessions

20 hrs ago



THE PUBLIC NEEDS THE TRUTH: NOT SOCIAL MEDIA HEADLINES & FAKE NEWS. #Stopperthehoax



COUPON DEALS

NEWSPAPER ADS

THIS WEEK'S CIRCULARS

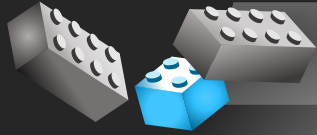
LIVE OAK — Suwannee County parents and community members will have three chances in the next week to provide input into the school district's school configuration plans.

The Suwannee County School District is hosting listening sessions Tuesday, Thursday and Aug. 20, all from 6-7:30 p.m.

Tuesday's first listening session will be held at the Suwannee Primary School cafeteria, with Thursday's

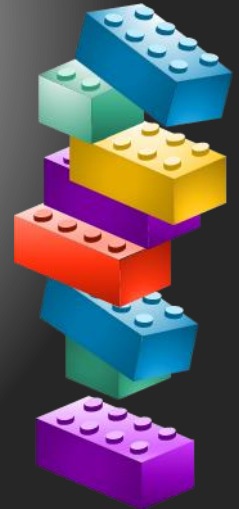
OBITUARIES

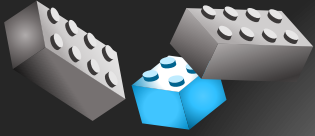
Boatright, II, John



Administrative Retreat

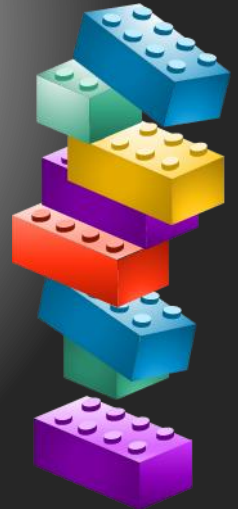
- June 5-6
- Administrative Brainstorming and Problem Solving Session

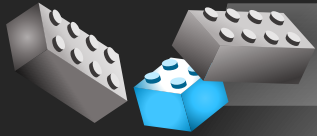




District Advisory

- July 15, 2019
- Presentation to DAC
- Highlights of Plan and Process

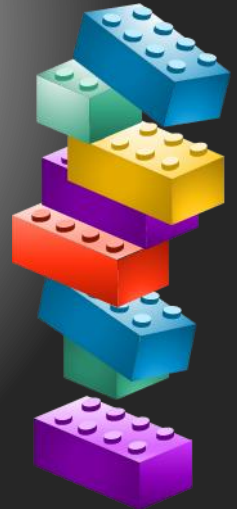


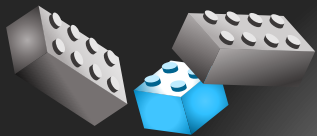


Configuration Committees

- Enrollment, Attendance, Safety – Malcolm Hines
- Human Resources – Walter Boatright
- Curriculum and Design – Amy Boggus
- Administrative Services – Bill Brothers
- Student Support Services – Debbie Land

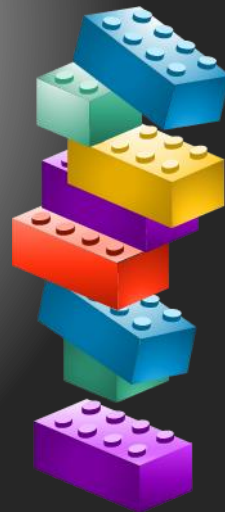
CONFIGURATION@SUWANNEE.K12.FL.US

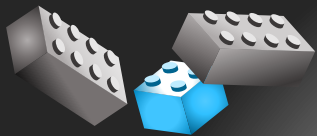




Pre-Planning Meetings

- Supt. Ted Roush went to All Schools
- Presented the One-Page Overview
- Fielded Questions/Concerns

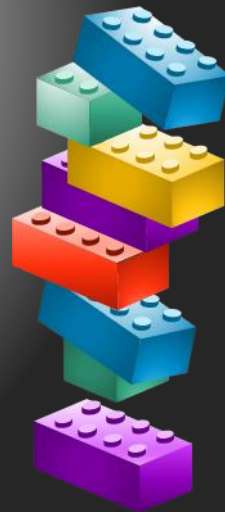


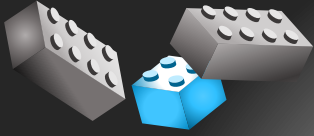


Teacher Survey

- One Page Survey
- No Names

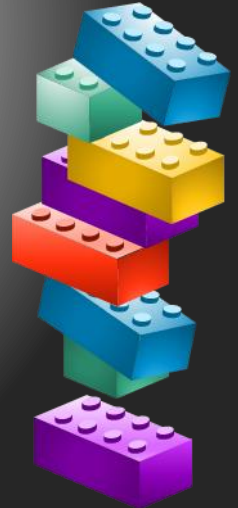
<https://www.surveymonkey.com/stories/SM-ZF3KQW3V/>

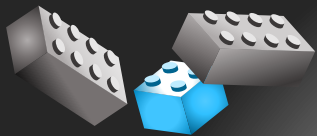




Meet Your Teacher

- Parent Survey
- Fielded Questions
- Talked about Upcoming Listening Sessions
- Thanks to Parent Support Team

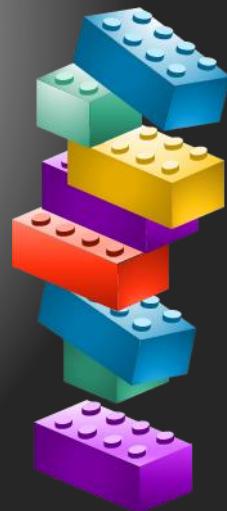


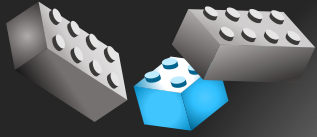


Listening Sessions

- SPS – August 13
- SES – August 15
- SIS – August 20

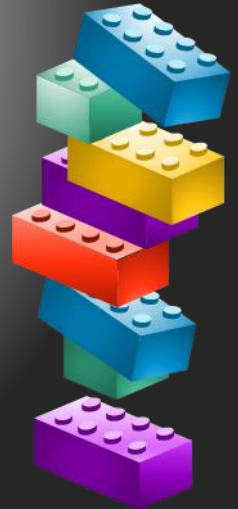
6:00 p.m. – 7:30 p.m.

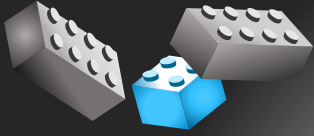




Teachers/Staff Listening

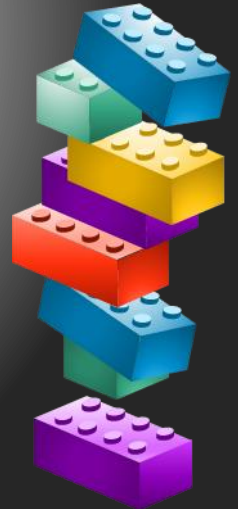
- PD Day
- August 26th

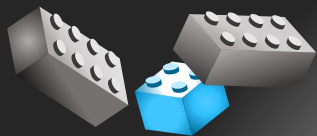




Committee Debrief

- September 3, 2019
- Committees compiling input
- Looking at Schools to Visit





Magnet School Visits

Magnet Schools

Magnet schools are public schools with a particular theme or academic focus, such as mathematics, science, technology, business, or performing arts. They provide parents and students with the option of choosing a school that matches a student's interests. Magnet schools offer students specialized programs and create innovative learning approaches in a diverse environment.

School Search

Select District: School Name: City: ZIP:

[Export to Excel](#)

Total number of records found for your search criteria is 13

School Name	District	Address	Grades Served	SACS Accredited	Status	Magnet Speciality
ABRAHAM LINCOLN MIDDLE SCHOOL (352) 955-6711 https://www.sbac.edu/lincoln	ALACHUA	1001 SE 12TH ST GAINESVILLE, FL 32641-8101	6-8	No	Magnet Program	Academically Talented
ARCHER ELEMENTARY (352) 495-2111 https://www.sbac.edu/archer	ALACHUA	14533 SW 170TH ST ARCHER, FL 32618-4621	PREK-5	No	Magnet Program	Academically Talented
EASTSIDE HIGH SCHOOL (352) 955-6704 https://www.sbac.edu/eastside	ALACHUA	1201 SE 43RD ST GAINESVILLE, FL 32641-7661	9-12	Yes	Magnet Program	International Baccalaureate
F. W. BUCHHOLZ HIGH SCHOOL (352) 955-6702 https://www.sbac.edu/buchholz	ALACHUA	5510 NW 27TH AVE GAINESVILLE, FL 32606-6405	9-12	Yes	Magnet Program	Other

